

963

TRACK LOADER



Nominal Net Power	2,000 rpm
ISO 9249/SAE J1349	151 kW (202 hp)
ISO 9249/SAE J1349 (DIN)	204 hp
Operating Weight	20 358 kg (44,881 lb)

Cat® C7.1 Engine meets U.S. EPA Tier 4 Final/EU Stage V/Japan 2014/Korea Tier 4 Final emission standards.



THE NEW CAT[®] 963

ULTIMATE VERSATILITY

Save money and transport time with one rugged machine that does it all – land clearing, digging, grading, truck loading, slope work and more. Crawler loaders give you lower ground pressure and better traction so you can start the job sooner, and work longer, in all kinds of underfoot conditions. Cat Track Loaders give you all this, plus outstanding performance and fuel efficiency.



THE MOST VERSATILE MACHINE ON THE JOBSITE

Your track loader can be the first machine on the job and the last to leave – no other single machine can do as many different tasks as a crawler loader. Traction and flotation mean you can work when and where others cannot, such as in wet, soft or rocky conditions. And when your job has special requirements, there is a purpose-built track loader that's up to the challenge:

- + LOW GROUND PRESSURE
- + WASTE HANDLER
- + SHIP HOLD
- + STEEL MILL



ONE MACHINE, MANY JOBS

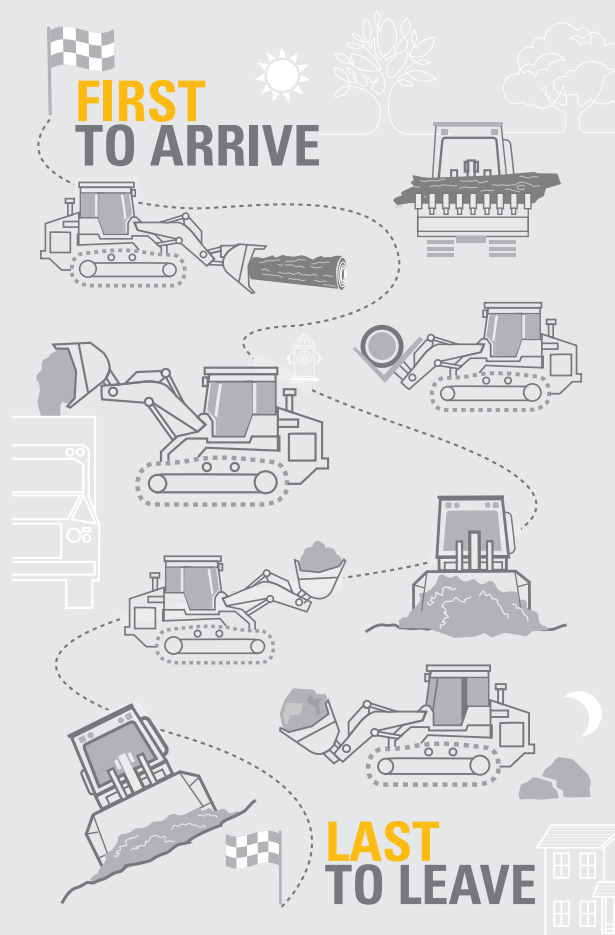
Transport, operate and maintain just one machine to dig, load, carry, fill and more. The Fusion™ quick coupler adds versatility with fast attachment changes.

UP TO 10% FUEL SAVINGS

A more efficient engine, along with Automatic, Eco and Power modes, help you match performance to the job and optimize fuel efficiency. Remote services and machine features help you save time and money on your service and maintenance.

MORE PRODUCTIVITY

Boost your productivity up to 20% with an optional Performance Series bucket. Get more power to the ground under load with up to 15% more peak torque.



FAST START

Remove trees, pick up debris, load it up to be carried away. Use the optional ripper to prepare hard ground. Excavate material, remove topsoil, stockpile. Track loaders give you the traction you need to work on uneven ground and poor underfoot conditions.

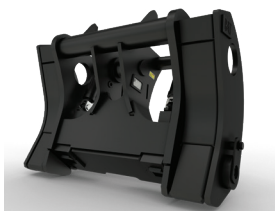
STEADY PACE

Dig foundations, load trucks, grade material and carry it away. Quickly move pipe and other materials around the jobsite. Backfill trenches and around foundations. Build and finish slopes up to 45°.

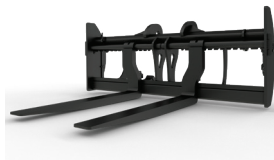
STRONG FINISH

When the job is done and all the other machines head home, your track loader can stick around to clean up rock, debris and dirt. You can even use it on finishing touches like building ponds and retaining walls or installing hardscape.

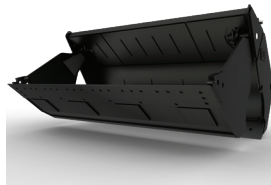




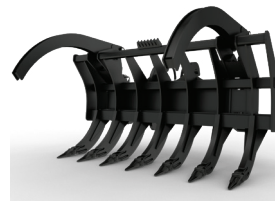
FUSION QUICK COUPLER



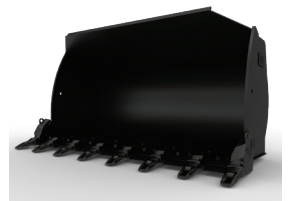
PALLET FORKS



MULTI-PURPOSE BUCKET



RAKE



**GENERAL PURPOSE
BUCKET**

QUICK ATTACHMENT CHANGES

Fusion Quick Coupler option lets you make fast attachment changes with a wide range of tools like forks, buckets, etc. from wheel loaders and other Fusion-compatible machines. Ask your Cat dealer about the range of tools available for the work you do.



SMOOTH OPERATOR

Smoother response gives you more precise control of the machine and implements. This makes overall operation easier and lets you take on detailed tasks.



SAVE FUEL, SAVE MONEY

Auto mode matches performance to the job so you get the engine power you need but use less fuel when doing lighter work. Save up to 10% on fuel compared to the 963K and up to 25% compared to the 963D. Eco mode provides added fuel savings in lighter-duty applications. Power mode delivers full power at all times so you can feel ready to take on the toughest applications.



TOP PERFORMER

The efficient Cat C7.1 engine delivers power and fast response when the machine is under load. With 15% more peak torque than the previous model, you get more power to the ground when you need it most.



BOOST YOUR PRODUCTIVITY

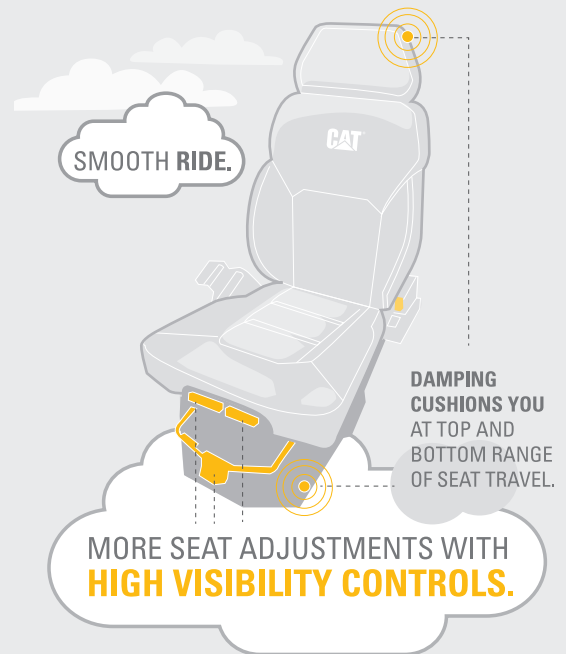
Get more work done in less time with the Performance Series bucket, designed to increase your productivity by up to 20% compared to a General Purpose bucket.

Updated cab offers added comforts and more storage. Reduced engine noise makes the environment quieter for the operator and others around the worksite.

Next-generation seat gives you a more comfortable ride and has dynamic end dampers to cushion you at the top and bottom range of seat travel. Enjoy more adjustment features, 4-point restraint compatibility and heated or heated/cooled options.

- Intuitive 10-inch (254 mm) touchscreen dash display.
- Standard high-definition rearview camera shows prominently in the main display.
- More heating/cooling airflow in the cab means greater comfort.
- Added lighting packages illuminate your work area.

EASY CHAIR





HELPING HANDS FOR EASE OF OPERATION

TAKE CONTROL

Select joystick or V-lever and pedal steering and either joystick or 2-lever implement controls. Smooth implement and steering response, plus improved steering performance, provide easy, precise operation. Set your implement response – fine, normal, coarse – to match preference or application.

EASIER TRUCK LOADING

Preset your repetitive lift, lower, rack, dump and float functions to make jobs like truck loading easier. Set each function separately with the simple push of a button in the cab.

SIMPLIFY SLOPE WORK

Slope Indicate shows machine mainfall and cross slope right on the display, without added hardware or software. Slope Indicate does not control the attachment, but it does provide a useful reference when doing jobs like cutting drainage, working on road embankments or grading on slopes.

LINE OF SIGHT

Cat buckets are designed with a ridge along the back that is parallel to the bucket floor and cutting edge. Use it as a simple tool to help calculate angles for jobs like drainage and grading.

LESS MAINTENANCE TIME

MORE TIME ON THE JOB

EASY ACCESS

The cab tilts 30° and locks in place with a bar, giving you convenient access for maintenance and repairs. Optional extended service package adds a manual hydraulic pump so you can easily tilt the cab in the field without a crane.

WHEN UPTIME COUNTS

Cat track loaders are designed to help you take care of routine maintenance and get back to work.

- + Grouped service points located behind large access doors; daily grease points in easy reach at ground level.
- + Easy ground-level access to battery disconnect, underhood light switch, access lighting and a new main switch.
- + New engine air filter is easier to service.
- + New air cleaner is easier to service and captures more debris for improved engine reliability.
- + Implement Return oil filter helps protect system from contamination.
- + Handy bracket holds a shovel for quick undercarriage clean-out.
- + Diesel Particulate Filter in the Clean Emissions Module designed to work for the life of the engine without needing to clean or replace the filter.

COOL AND CONVENIENT

Hydraulic demand fan reduces speed in cooler conditions to conserve power, save fuel and decrease sound levels. It's designed to reduce plugging, and fold-down access provides easy clean-out. Optional reversing fan is available for high debris conditions.



CAT LINK TECHNOLOGY

TAKES THE GUESSWORK OUT OF MANAGING YOUR EQUIPMENT

Cat Link telematics technology helps take the complexity out of managing your jobsites by gathering data generated by your equipment, materials and people serving it up to you in customizable formats.

CAT PRODUCT LINK™

Product Link collects data automatically and accurately from your assets – any type and any brand. Information such as location, hours, fuel usage, productivity, idle time, maintenance alerts, diagnostic codes and machine health can be viewed online through web and mobile applications.



VISIONLINK®

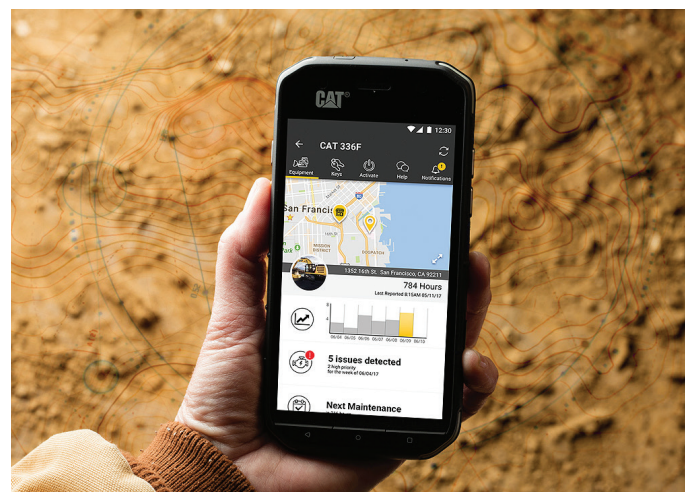
Access information anytime, anywhere with VisionLink – and use it to make informed decisions that boost productivity, lower costs, simplify maintenance and improve safety and security on your jobsite. With different subscription level options, your Cat dealer can help you configure exactly what you need to connect your fleet and manage your business, without paying for extras you don't want. Subscriptions are available with cellular or satellite reporting or both.



REMOTE SERVICES

The Cat App helps you manage your assets – at any time – right from your smartphone. See fleet location and hours, get critical required maintenance alerts and even request service from your local Cat dealer.

- + **Remote Flash** – get software updates to one or more machines remotely. You just need a designated person close to the machine to initiate/confirm the update.
- + **Operator ID** lets you track machine operation by individual operator using the main display and Product Link.



WORK MORE SAFELY

LOOKING OUT FOR YOU

Cat track loaders are designed to help operators work more safely. Ergonomics, a quiet engine and low-effort controls help lessen fatigue so operators are better able to remain fresh and focused.



BETTER VIEW

Standard rear-vision camera, located right in the main dash display, makes it easier to see people or obstacles behind the machine.

BUCKLE UP

Seat belt indicator gives an alarm and registers fault code through Product Link if the operator fails to buckle up, enhancing jobsite safety.

BRIGHTER LIGHT

Illuminate your worksite with LED lighting and optional beacons. Added lights at the bottom of the cab shine on the track, and fender LED lights help light up the work area in low light conditions.

EASY TRANSPORT

Added machine tie downs at the front and rear of the machine give you a safe way to secure the machine during shipment. Please refer to the Operating and Maintenance Manual for details.



ON AND OFF WITH EASE

Cat track loaders are designed with operator safety in mind. Grab handles and steps are located at both the front and back of the machine so you can climb on and off more easily.

PURPOSE-BUILT TO **TAKE ON THE TRASH**

Take on a variety of tasks in a landfill or transfer station. Push, shred and compact waste. Create and maintain access, dig cells and work cover material.



HEAVY-DUTY WASTE HANDLER

Factory-equipped guarding and seals help protect the machine, undercarriage and cooling system from impact and airborne debris. Choice of buckets and track shoes allow you to further optimize the machine for greater performance and service life.

CLEANOUT AND COMPACTION

Wide gauge undercarriage and standard width track helps reduce debris buildup for easier cleaning. Added weight, plus narrower track shoe, increases ground pressure for greater compaction.

GO TO EXTREMES

For tougher tasks like demolition and transfer stations, choose an Extreme Service package with even more guarding and screens to help protect the windshield and operator from breakage and debris.

CAPABLE SPECIALISTS

EQUIPPED FOR YOUR JOB

Track loaders are second to none when it comes to versatility, agility and the ability to work in tight spaces. And when the job has specific demands, you can equip your loader from the factory to take on the challenge.

LOW GROUND PRESSURE

When you need even more flotation and traction, or are working in more sensitive ground conditions, choose a Low Ground Pressure (LGP) loader. The wider tracks provide added ground contact area, giving you lower ground pressure and better flotation. The wider tracks also add to machine stability for slope work.



SHIP SHAPE

Traction, high reach and machine balance make track loaders ideal for working in ship holds and port handling duties. Work with ease in tight spaces and on uneven ground. Specialized guarding and seals help protect the machine, while attachments like coal buckets and trim blades help you get the job done.



HOT SPOTS

Your track loader can be factory equipped with a heat-resistant cab, high-temperature guarding and other features to help protect the machine and operator in high-temperature steel mill work.

Important Notice: This package DOES NOT feature all the other modifications required to allow the machine to run on hot slag. Please consult with your Cat dealer for details.



TECHNICAL SPECIFICATIONS

See cat.com for complete specifications.

ENGINE		
Engine Model	Cat C7.1	
Emissions	U.S. EPA Tier 4 Final/EU Stage V Japan 2014/Korea Tier 4 Final	
Build Number	12A	
Nominal Net Power		
ISO 9249/SAEJ1349	151 kW	202 hp
ISO 9249/SAEJ1349 (DIN)		204 hp
Fuel Tank	320 L	84.5 gal
DEF Tank	16 L	4.2 gal

- All nonroad Tier 4 Interim and Final, Stage IIIB, IV and V, Japan 2014 (Tier 4 Final) and Korea Tier 4 Final diesel engines are required to use only Ultra Low Sulfur Diesel (ULSD) fuels containing 15 ppm EPA/10 ppm EU (mg/kg) sulfur or less. Biodiesel blends up to B20 (20% blend by volume) are acceptable when blended with 15 ppm (mg/kg) sulfur or less ULSD. B20 should meet ASTM D7467 specification (biodiesel blend stock should meet Cat biodiesel spec, ASTM D6751 or EN 14214). Cat DEO-ULS™ or oils that meet the Cat ECF-3, API CJ-4 and ACEA E9 specification are required. Consult your OMM for further machine specific fuel recommendations.
- Diesel Exhaust Fluid (DEF) used in Cat selective catalytic reduction (SCR) systems must meet the requirements outlined in the International Organization for Standardization (ISO) standard 22241.
- The air conditioning system on this machine contains the fluorinated greenhouse gas refrigerant R134a (Global Warming Potential = 1430). The system contains 1.1 kg of refrigerant which has a CO₂ equivalent of 1.573 metric tonnes.

OPERATING WEIGHTS		
Standard	20 358 kg	44,881 lb
Low Ground Pressure (LGP)	22 762 kg	50,181 lb
Waste Handler	20 661 kg	45,549 lb

BUCKETS				
	Capacity		Width	
General Purpose	2.5 m ³	3.2 yd ³	2571 mm	101.2 in
Performance Series	2.8 m ³	3.7 yd ³	2671 mm	105.2 in
Multi-purpose	2.0 m ³	2.6 yd ³	2575 mm	101.3 in
Landfill	3.1 m ³	4.1 yd ³	2571 mm	101.2 in
Wide Flush	2.8 m ³	3.8 yd ³	2998 mm	118.1 in
General Purpose Fusion	2.5 m ³	3.2 yd ³	2571 mm	101.2 in
Wide Fusion	2.7 m ³	3.5 yd ³	2998 mm	118.1 in

UNDERCARRIAGE			
Track Shoe Width – Standard	550 mm	22.0 in	
Track Shoe Width – Optional	450 mm	18.0 in	
Track Shoe Width – LGP	800 mm	31.0 in	
Track Rollers/Shoes – Each Side	7/38		
Track on Ground	2542 mm	100.0 in	
Ground Contact Area – Standard Shoe	3.2 m ²	4,900 in ²	
Ground Contact Area – Optional Shoe	2.6 m ²	4,013 in ²	
Ground Contact Area – LGP	4.6 m ²	7,136 in ²	
Ground Pressure – Standard Shoe	63.0 kPa	9.1 psi	
Ground Pressure – Optional Shoe	77.0 kPa	11.2 psi	
Ground Pressure – LGP	48.5 kPa	7.0 psi	
Track Gauge	1850 mm	72.8 in	

DIMENSIONS			
Overall Machine Width/Without Bucket			
Standard Tracks – 550 mm (21.6 in) Shoes	2400 mm	94.5 in	
Narrow Tracks – 450 mm (17.7 in) Shoes	2300 mm	90.5 in	
LGP Tracks – 800 mm (31.5 in) Shoes	2900 mm	114.2 in	
Ground Clearance	471 mm	18.5 in	
Machine Height to Top of Cab	3325 mm	130.9 in	
Overall Machine Length*	7001 mm	275.6 in	
Carry Position Approach Angle		15°	
Digging Depth*	138 mm	5.4 in	
Maximum Rollback at Ground/Carry Position		43°/50°	
Bucket Height in Carry Position	457 mm	18.0 in	
Reach at Full Lift Height and 45° Dump*	1373 mm	54.0 in	
Clearance at Full Lift Height and 45° Dump*	2915 mm	114.8 in	
Maximum Rollback/Dump, Fully Raised		52°/53°	
Grading Angle		63°	
Height to Bucket Hinge Pin	3940 mm	155.1 in	
Overall Machine Height, Bucket Fully Raised	5402 mm	212.7 in	
Height to Top of Stack	2940 mm	115.7 in	
Ramp Angle		29°	

*With General Purpose bucket and extra duty teeth.

STANDARD & OPTIONAL EQUIPMENT

Standard and optional equipment may vary. Consult your Cat dealer for details.

POWER TRAIN	STANDARD	OPTIONAL
Cat C7.1 diesel engine	•	
Biodiesel compatible up to B20	•	
Load sensing implement pump	•	
Modular cooling system	•	
OPERATOR ENVIRONMENT	STANDARD	OPTIONAL
Pressurized, sound-suppressed, ROPS/FOPS cab with tinted glass and sliding window	•	
Special application cab with dual pane/polycarbonate window		•
Full-color 10-in. (254 mm) liquid crystal touchscreen display	•	
Integrated rearview HD camera	•	
Joystick or V-lever-and-pedal steering controls		•
Joystick or 2-lever implement controls		•
Comfort seat	•	
Premium seat		•
Deluxe seat		•
Adjustable armrests	•	
Radio ready	•	
Radio AM/FM Bluetooth®		•
Radio AM/FM/DAB+ Bluetooth		•
Radio AM/FM/Sirius XM Bluetooth		•
Communication radio ready - FM		•
12V power outlet and 5V USB port	•	
Heat/air conditioning	•	
Storage areas throughout cab	•	
Grab handle on dash	•	
Lights – 4 halogen	•	
Lights – 8 LED		•
Lights – 2 LED front/bottom of cab, access light		•
LED flashing beacon		•
CAT TECHNOLOGY	STANDARD	OPTIONAL
Slope Indicate	•	
Product Link – cellular	•	
Product Link – dual cellular/satellite		•
Remote flash/troubleshoot	•	
Operator ID	•	
Machine security – passcode	•	
Machine security – Bluetooth		•

BUCKETS	STANDARD	OPTIONAL
Pin-on coupler	•	
Fusion quick coupler		•
General Purpose bucket		•
Multi-purpose bucket		•
Performance bucket		•
Landfill bucket		•
UNDERCARRIAGE	STANDARD	OPTIONAL
Caterpillar Heavy Duty undercarriage	•	
Cat Abrasion undercarriage		•
Oscillating track roller frames	•	
Single, Double or Triple Grouser track shoes		•
Waste or Wide Gauge undercarriage		•
SERVICE AND MAINTENANCE	STANDARD	OPTIONAL
Hinged radiator guard and swing out fan	•	
Ecology drains	•	
High speed oil change		•
4 x 2 Easy tie-down points on chassis	•	
Shovel holder	•	
Ground-level service center	•	
Hydraulic tilt cab		•
Fast fuel fill		•
Refueling pump		•
Hydraulic demand fan	•	
Hydraulic demand fan, reversing		•
Underhood work light		•
ATTACHMENTS	STANDARD	OPTIONAL
Ripper-ready rear hydraulics		•
Multi-shank ripper		•
Bumper		•
Counterweights		•
Ripper hitch		•
Striker bar box		•

Not all features are available in all regions. Please check with your local Cat dealer for specific offering availability in your area.
For additional information, refer to the Technical Specifications brochures for the 963 available at www.cat.com or your Cat dealer.

For more complete information on Cat products, dealer services, and industry solutions, visit us on the web at www.cat.com.

VisionLink is a trademark of Trimble Navigation Limited, registered in the United States and in other countries.

Materials and specifications are subject to change without notice. Featured machines in photos may include additional equipment. See your Cat dealer for available options.

©2020 Caterpillar. All Rights Reserved. CAT, CATERPILLAR, LET'S DO THE WORK, their respective logos, Product Link, Fusion, "Caterpillar Corporate Yellow", the "Power Edge" and Cat "Modern Hex" trade dress as well as corporate and product identity used herein, are trademarks of Caterpillar and may not be used without permission.

www.cat.com www.caterpillar.com

AEXQ2993-00
Build Number: 12A
(Aus-NZ, Eur, Japan,
Korea, N Am)

